



August 28th, 2019

**//ATTENTION RESIDENTS//**

Tropical Storm Dorian strengthened to a hurricane Wednesday afternoon and is now threatening the entire state of Florida during the upcoming Labor Day weekend, Sunday, September 1st, and Monday, September 2nd.

Contemporary Management Concepts reminds all residents to stay safe, be prepared and refer to your county's hurricane preparedness website safety and evacuation information for storm updates. We have compiled valuable safety information on the following pages. Please take a moment, now to read this valuable information.

- 1) Be proactive and bring all plants, furniture and decorations in from your patio now, to prevent these items from becoming projectiles in high winds.
- 2) Ensure all windows are tightly closed in the event of strong wind and rain.
- 3) If you and your family decide to evacuate please notify your leasing office via text message.
- 4) If you evacuate, under no circumstances, are pets to be left your apartment. Please take your pets with you.

Management will secure all items on property, including pool furniture and umbrellas. If the leasing office is closed, residents should report storm damage or water intrusion via phone to the after-hours call center at (352) 505-6966 or (800) 919-9888.

If you have any questions or concerns, please contact your onsite property management office.

Sincerely,  
Contemporary Management Concepts

# HURRICANE PREPAREDNESS KIT



Prescription Drugs



Water Supply for  
72 Hours



Plastic Sheets



Dust  
Mask



Extra Batteries



Garbage Bags



Battery-powered Radio



Pet Food



Basic Tools

Duct  
Tape



First  
Aid  
Kit



Cell Phone,  
Chargers &  
Solar Charger



Towels



Food Supply for  
72 Hours



Flashlights



Manual Can Opener



Moist  
Towelettes



Whistle

Plastic Ties



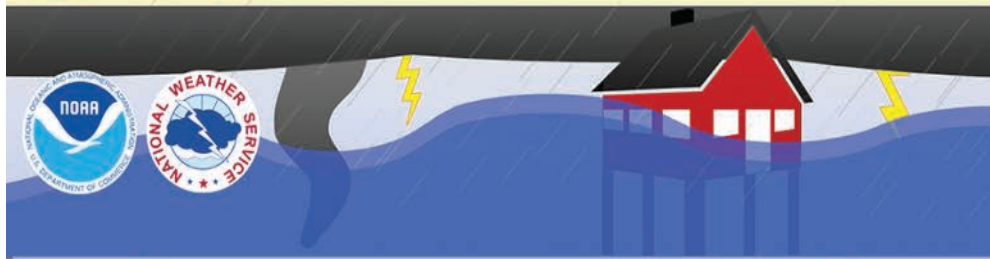
## Not evacuating and staying home?

- Ensure you have enough food, water, medications, and other supplies in your survival kit to last at least 2 weeks.
- Turn refrigerator to coldest setting and keep closed.
- Turn off propane tanks.
- Unplug small appliances.
- Fill bathtub and other containers with water for cleaning and flushing. Additional water is stored for drinking.
- Cover all windows and other openings with hardened protections. If you do not have manufactured shutters, cut plywood and secure to protect the windows.
- Close all interior doors and brace outer doors.
- Select an interior room to use as a safe room.
- Plan as though you were evacuating and have enough cash on hand to sustain purchasing of gas, food, and other supplies in the days following the storm.
- If you have a generator, ensure you have enough gas on hand to sustain usage for several days.
- Ensure you have sufficient medications in case you are confined to your home for several days. Post-storm there may not be any electricity and pharmacies will probably closed even with a minor storm.
- Plan to cook on a camp stove or grill in the days immediately after the storm passes.





## THINGS TO KNOW ABOUT HURRICANE HAZARD RISKS



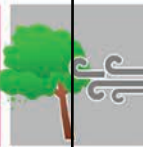
1

Storm surge is water pushed ashore by the winds of a tropical cyclone. It has caused more fatalities than any other hurricane hazard.



2

Winds from a hurricane are 74 mph or greater and can cause massive damage to buildings and structures in its path.



3

Inland flooding is the most frequent cause of tropical cyclone fatalities. It can occur far from the coast and long after landfall.



4

Tornadoes are commonly spawned by a hurricane and can cause damage far away from the center of the hurricane.



5

Rip currents and waves along and near the coast can be deadly even if the center of the storm passes well offshore.



### Home Inventory

- Video or pictures
- Home Security

### Home Security

- Windows
- Roof
- Garage Door
- Clear miscellaneous items that are outside of the house

### Document Checklist

- Important numbers and emergency contacts
- Credit cards
- Medical records and blood type
- Prescription information (list of medications, dosage, prescription numbers, etc.)
- Doctors' name, address and telephone number
- Cash for emergencies
- Bank account numbers
- List of savings and investments, including CDs, stocks, bonds and mutual funds
- Household inventory - either a paper copy, video recording or computer disk
- List of insurance policies with name of company, type of policy and policy number
- Copy of wills, trust documents and living wills
- Titles for your house, car and other property
- Birth, marriage, divorce, death and adoption certificates
- Passports
- List of family advisors: accountant, attorney, banker, doctors, dentist, employer, financial adviser, insurance agents and religious leader
- Educational and military records
- Other special papers that would be difficult or impossible to replace if lost
- Driver's license or personal identification cards



For more Hurricane Safety Information, visit  
[weather.gov/hurricanesafety](http://weather.gov/hurricanesafety)



- Fill up your gas tank, have your car serviced and ready for a long drive.
- Check your tires, belts, hoses, filters, oil and air-conditioning.
- Make sure you have jumper cables, road flares or reflectors, a first aid kit and a can of non-flammable inflatable tire repair compound.
- Have car chargers for phones, laptops and/or a small power inverter to convert the car's DC battery power into an AC plug.
- Pack an empty gas can in case you need to get more gasoline.

- Alachua County Regional Transit System bus service is suspended when winds reach sustained 35 mph.

In 2006, the Legislature passed the **Emergency Prescription Refill** bill (Florida Statute 252.358 and 462.0275). This law requires all insurers and managed care organizations to suspend refill-too soon restrictions when a patient seeks a refill in a county is a) currently under a hurricane warning issued by the National Weather Service **or** b) declared to be under a state of emergency in an executive order issued by the Governor, **or** c) has activated its Emergency Operations Center and its emergency management plan.

Go online and locate several pet-friendly hotels in and out of your area. Identify friends or relatives outside your area where you and your pets can stay. If there is a disaster pending, evacuate early with your pets, working animals and livestock. Don't wait for a mandatory evacuation order and animals should have leg bands or tattoos, microchips or identification tags with their name as well as your address and phone number.



**ALERT ALACHUA.com**  
EMERGENCY NOTIFICATION SYSTEM

## Polk County Shelter Information

